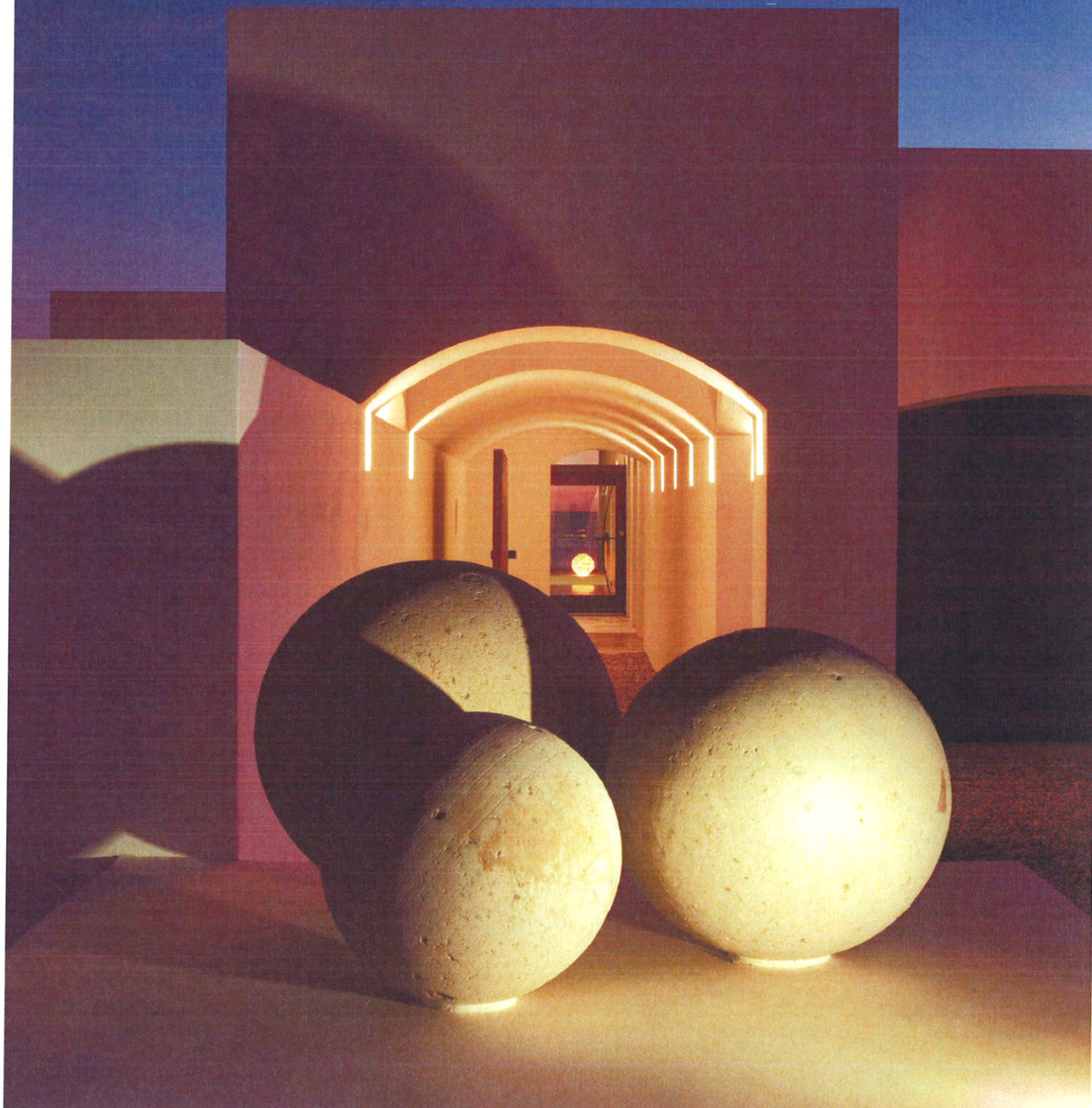


# eNTRA

design + architecture magazine



DESTINATIONS | FIJI

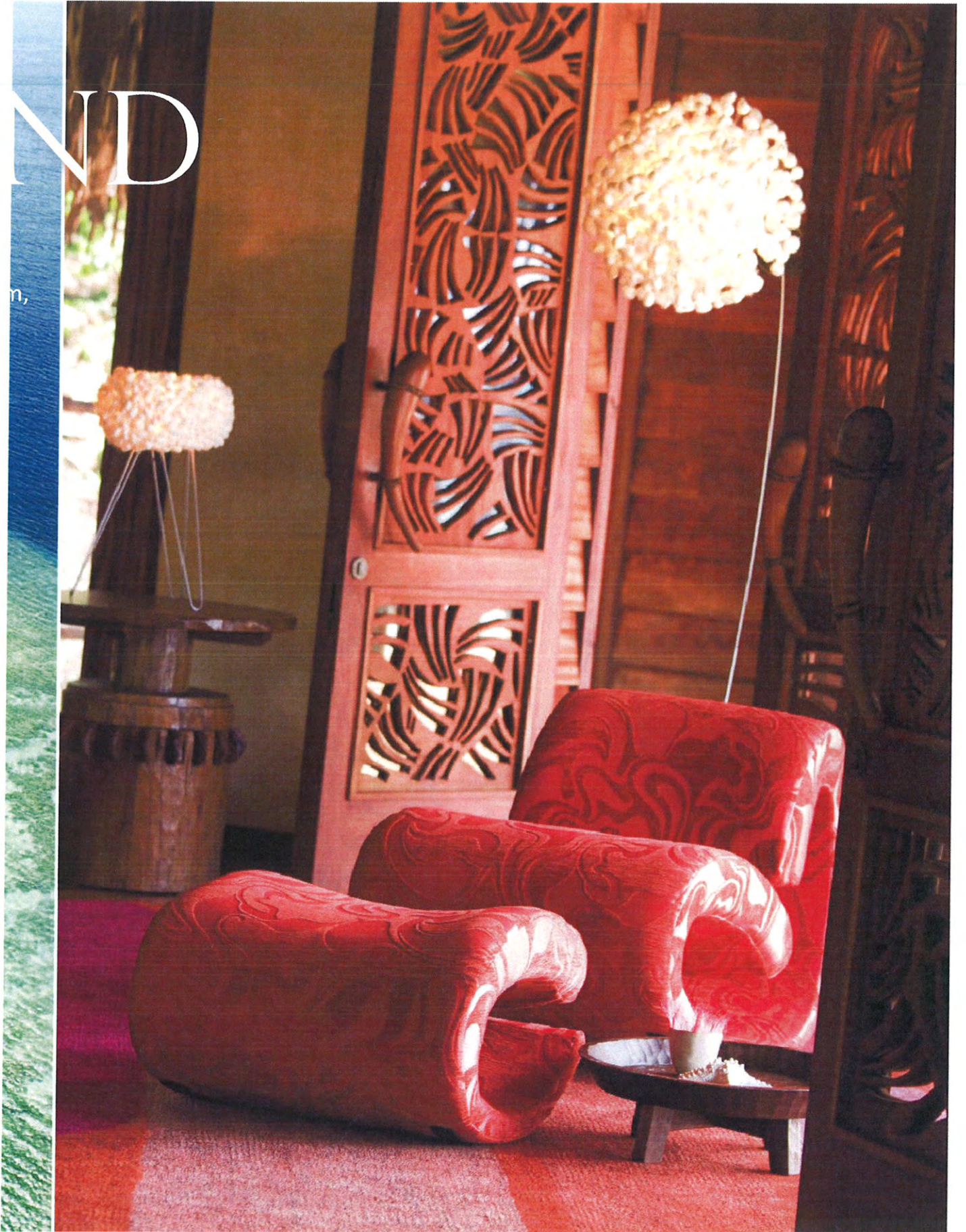
# LAUCALA ISLAND

First documented by Captain Bligh while aboard the *Bounty*, Laucala's sheer beauty could justify mutiny. After Fiji, surely no sailor would return so readily to the cold waters of the North Sea. Since Bligh's visit, the 3,000-acre isle has been a coconut farm, a cotton plantation, and home to two tycoons. Now, it's an exclusive resort.



ND

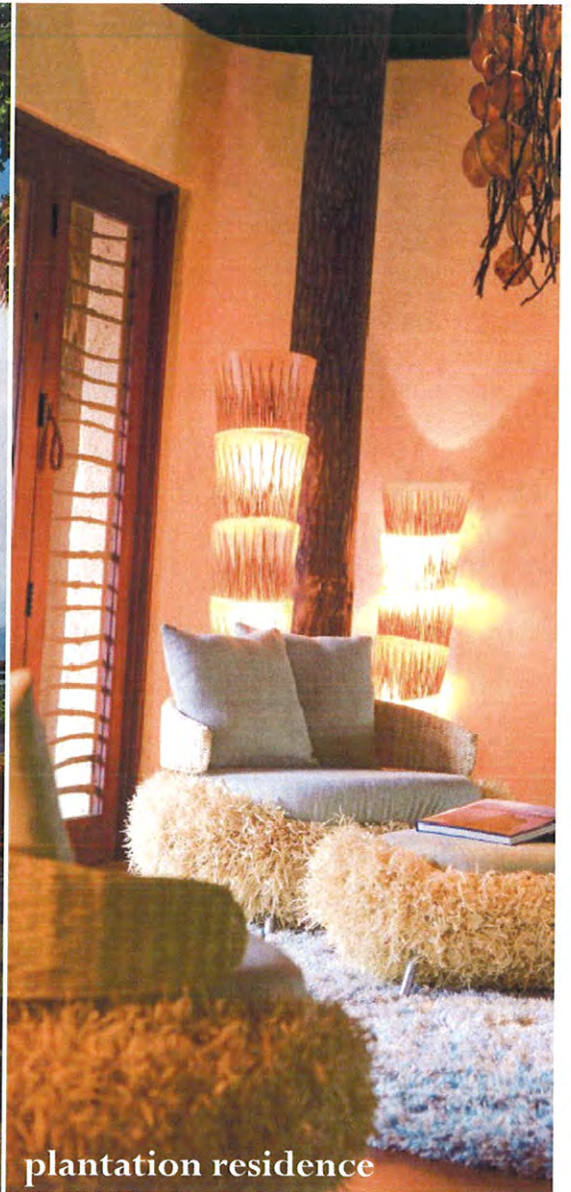
m,



## FIJI



seagrass lounge



plantation residence

When London-based designer [Lynne Hunt](#) was approached to create a resort on a private Fijian island, she let the subequatorial landscape set the brief. Local timber, stone, and thatch were used for plantation-style buildings and traditional bure structures, while driftwood, monkey-pod, and coconut were used for furniture. “We photographed timber that was lying on the beach, along with seashells, palm fronds, and roots. All of them influenced the custom furnishings,” says Hunt. “The island has a host of colors in both flora and fauna—the most beautiful birds, flowers, and insects—all were an inspiration to the interiors.”

For the resort’s 25 villas, the designer chose textiles with “texture and movement, hence the shag pile of the organically shaped rugs, the fuzzy armchairs, and the whimsical Florence Broadhurst fabrics.” She turned to local painters and photographers for images of Laucala’s forests and beaches. The resort (the sole occupant of the resource-rich island) raises livestock, bees, and produce to support its five restaurants. It’s even developed its own line of bath products. Aside from hiking, horse-back riding, a hill-top spa, and a fleet of pleasure craft, Laucala Island boasts a championship golf course by Scotsman [David McLay Kidd](#).



seagrass residence

**laucala island**

*P.O. Box 11479  
Nadi Airport  
Fiji Islands  
[laucala.com](http://laucala.com)*